

Sizing and Fit

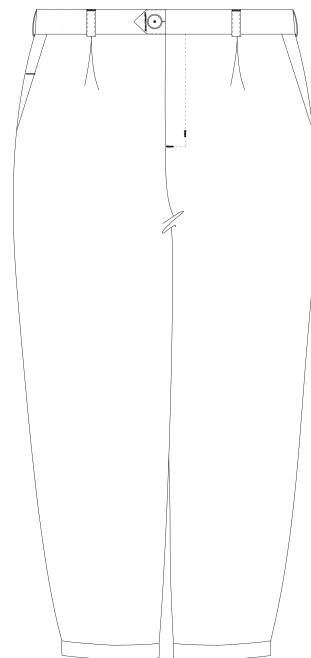
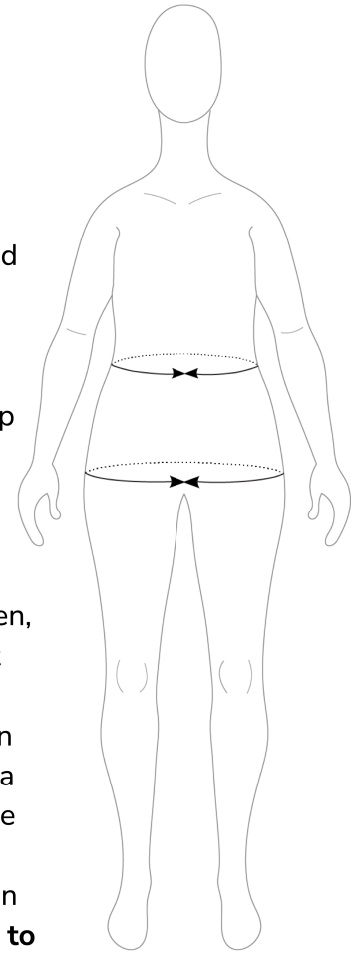
Body Measurements

Size	Waist	Hip
A	25" 63.5cm	33" 83.8cm
B	26" 66cm	34" 86.4cm
C	27" 68.6cm	35" 88.9cm
D	28" 71.1cm	36" 91.4cm
E	29" 73.7cm	37" 94cm
F	30" 76.2cm	38" 96.5cm
G	32" 81.3cm	40" 101.6cm
H	34" 86.4cm	42" 106.7cm
I	36" 91.4cm	44" 111.8cm
J	38" 96.5cm	46" 116.8cm
K	40" 101.6cm	48" 121.9
L	43" 109.2cm	51" 129.5cm
M	46" 116.8cm	54" 137.2cm
N	49" 124.5cm	57" 144.8cm
O	52" 134.6cm	60" 152.4cm
P	55" 138.7cm	63" 160cm
Q	58" 147.3cm	66" 167.6cm
R	61" 154.9cm	69" 175.3cm
S	64" 162.6cm	72" 182.9cm

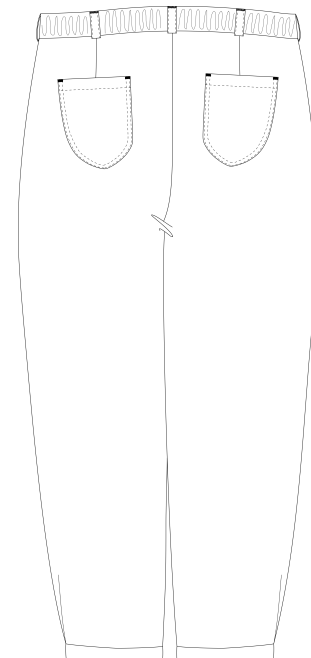
The Jones Trousers are designed to have 6" (15.2cm) of ease at the hips. See **Fit Guide** on pg. 5-6 for further fit information and how to make adjustments.

The Jones Trousers are designed with comfort and style in mind. They are intended to fit at your natural waist with a slightly dropped crotch and the cuff falling just above the ankle. In addition, plenty of ease has been added throughout the hip and thighs.

If your waist and hip fall into different sizes, compare your body measurements to the final garment measurements within the size chart. Then, depending on the ease you prefer, you can select your size based on either your waist or hip. If you prefer less ease at the hip, choose a size based on your waist measurement. Or, if you fall between a few size ranges, you may choose to select the size within the middle of that range. For a slimmer fit, size down as the waist pleats and elastic back can be adjusted to fit your needs. **It is recommended to sew a test muslin first to ensure the fit works with your preferences.**



Front View

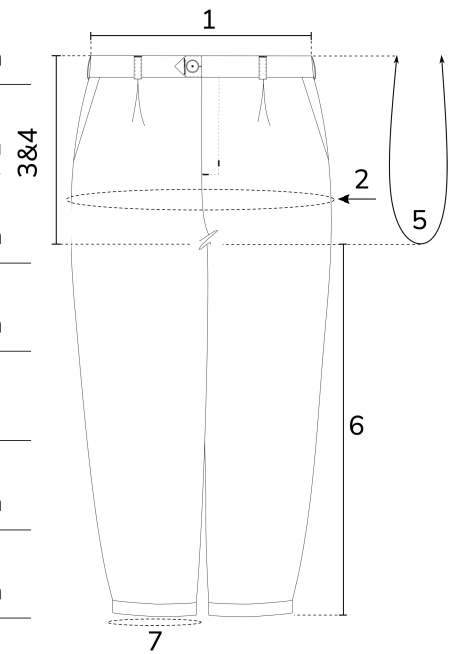


Back View

Finished Garment Measurements

	1	2	3	4	5	6	7
A	30" 76.2cm	39" 99.1cm	10.5" 26.9cm	11.5" 28.9cm	27.25" 69.2cm	27" 68.6cm	15.125" 38.4cm
B	31" 78.7cm	40" 101.6cm	10.5" 26.9cm	11.5" 28.9cm	27.5" 69.9cm	27" 68.6cm	15.25" 38.7cm
C	32" 81.3cm	41" 104.1cm	10.5" 26.9cm	11.5" 28.9cm	27.75" 70.5cm	27" 68.6cm	15.375" 39.1cm
D	33" 83.8cm	42" 106.7cm	10.5" 26.9cm	11.5" 28.9cm	28" 71.1cm	27" 68.6cm	15.75" 40cm
E	34" 86.4cm	43" 109.2cm	10.5" 26.9cm	11.5" 28.9cm	28.25" 71.8cm	27" 68.6cm	16.125" 41cm
F	35" 88.9cm	44" 111.8cm	10.5" 26.9cm	11.5" 28.9cm	28.5" 72.4cm	27" 68.6cm	16.5" 41.9cm
G	37" 94cm	46" 116.8cm	10.625" 27.3cm	11.625" 29.3cm	29" 73.7cm	27" 68.6cm	17" 43.2cm
H	39" 99.1cm	48" 121.9cm	10.75" 27.6cm	11.75" 29.6cm	29.5" 74.9cm	27" 68.6cm	17.5" 44.5cm
I	41" 104.1cm	50" 127cm	10.875" 27.9cm	11.875" 29.9cm	30.25" 76.8cm	27" 68.6cm	18" 45.7cm
J	43" 109.2cm	52" 132.1cm	11" 28.2cm	12" 30.2cm	31" 78.7cm	27" 68.6cm	18.5" 47cm
K	45" 114.3cm	54" 137.2cm	11.125" 28.5cm	12.125" 30.5cm	31.75" 80.6cm	27" 68.6cm	19" 48.3cm
L	48" 121.9cm	57" 144.8cm	11.5" 29.5cm	12.5" 31.5cm	33" 83.8cm	27" 68.6cm	19.5" 49.5cm
M	51" 129.5cm	60" 152.4cm	11.875" 30.4cm	12.875" 32.4cm	34.25" 87cm	27" 68.6cm	20" 50.8cm
N	54" 137.2cm	63" 160cm	12.5" 32cm	13.5" 34cm	36.25" 92.1cm	27" 68.6cm	20.75" 52.7cm
O	57" 144.8cm	66" 167.6cm	13.125" 33.6cm	14.125" 35.6cm	38.25" 97.2cm	27" 68.6cm	21.5" 54.6cm
P	60" 152.4cm	69" 175.3cm	13.625" 34.9cm	14.625" 36.9cm	40" 101.6cm	27" 68.6cm	22.25" 56.5cm
Q	63" 160cm	72" 182.9cm	14.125" 36.1cm	15.125" 38.1cm	41.75" 106cm	27" 68.6cm	23" 58.4cm
R	66" 167.6cm	75" 190.5cm	14.625" 37.4cm	15.625" 39.4cm	43.5" 110.5cm	27" 68.6cm	23.75" 60.3cm
S	69" 175.3cm	78" 198.1cm	15" 38.4cm	16" 40.4cm	45" 114.3cm	27" 68.6cm	24.5" 62.2cm

1. Waist*
2. Hip
3. Front Rise**
4. Back Rise**
5. Total Crotch Curve
6. Inseam
7. Hem sweep - pleat at ankle



Drafted for a 5'6" (167.6cm) tall person with the hem falling at the ankle.

*Waist measurement taken without elastic inserted into back of waistband and assuming that the pants are buttoned.

**Measured from top of waistband to leg gusset seam.